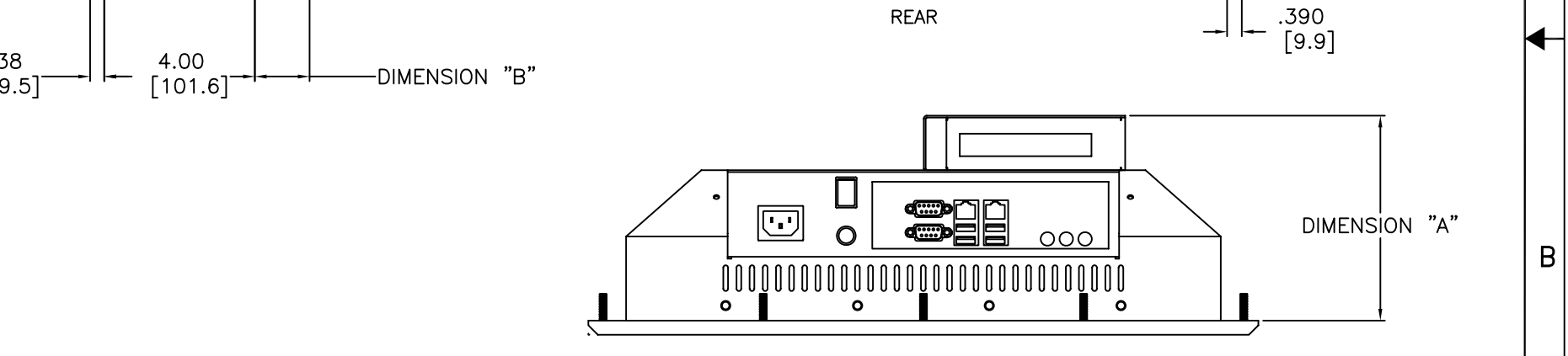
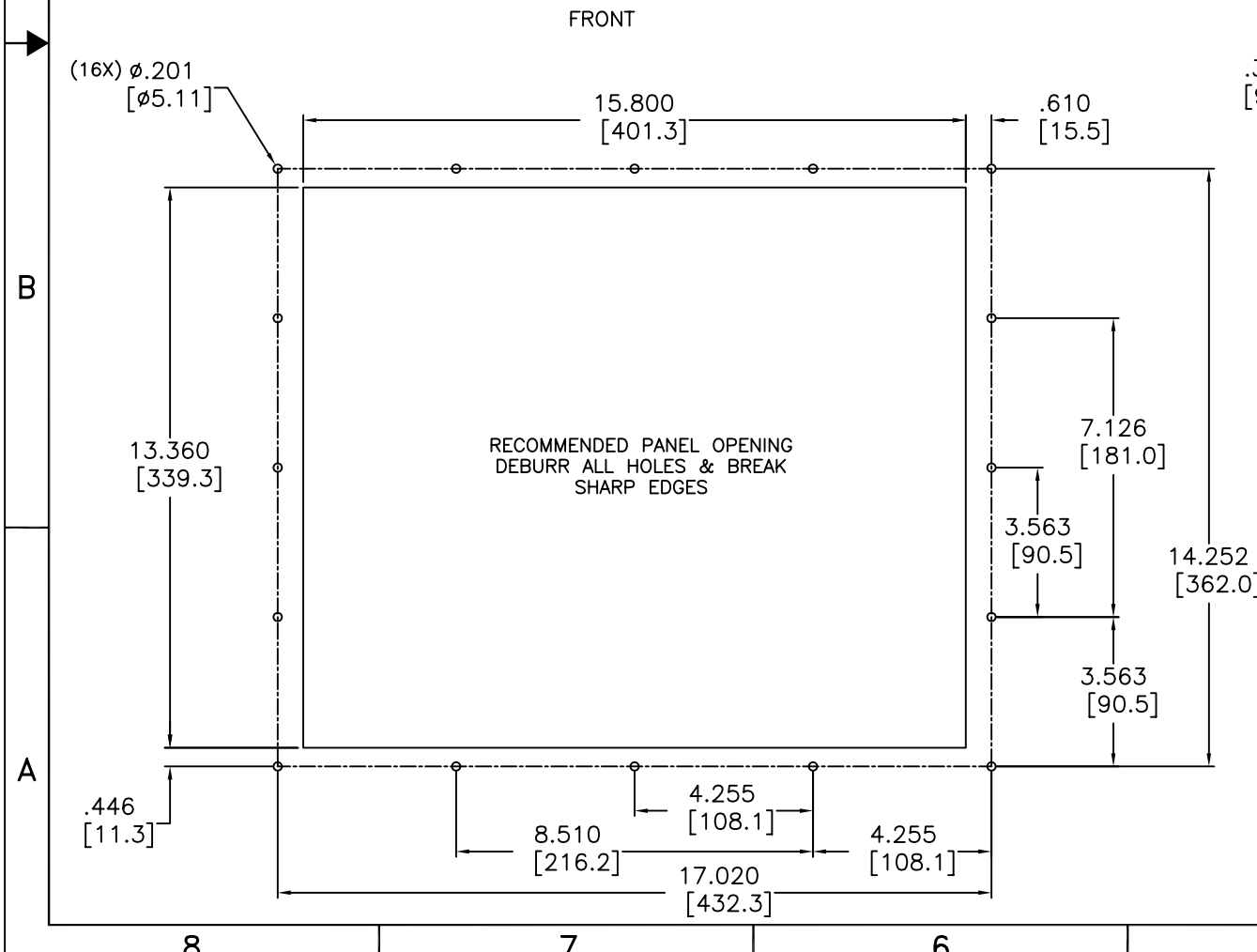
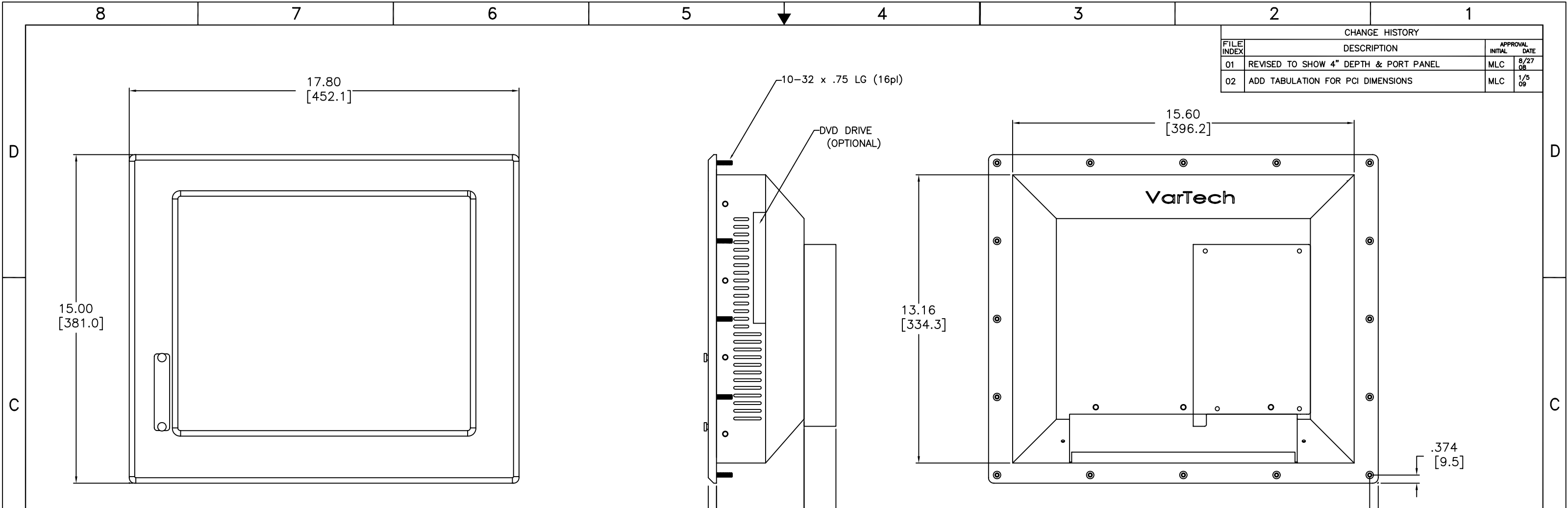


CHANGE HISTORY			
FILE INDEX	DESCRIPTION	APPROVAL INITIAL	APPROVAL DATE
01	REVISED TO SHOW 4" DEPTH & PORT PANEL	MLC	8/27/08
02	ADD TABULATION FOR PCI DIMENSIONS	MLC	1/5/09



NUMBER OF PCI PORTS	DIMENSION "A"	DIMENSION "B"
3 PORTS	7.40" (187.8mm)	3.40" (86.2mm)
2 PORTS	6.61" (167.8mm)	2.61" (66.3mm)
1 PORT	5.12" (130.0mm)	1.12" (28.5mm)

ITEM	QTY	MFR. PT.NO.	DESCRIPTION	SYM/NOTE
LIST OF MATERIALS				
UNLESS OTHERWISE SPECIFIED DIMENSIONS ARE IN INCHES AND APPLY BEFORE FINISH SURFACE ROUGHNESS .125/ TOLERANCE ON FRACTIONS   DECIMALS   ANGLES		DRAWN NM 03/12/2008		
± 1/64   ±.XX=.02   ± 1/2		CHECKED		
MATERIAL		DRAFTING		
VTPC170P		ENGINEER		
USED ON		MANUF		
APPLICATION		APPROVED		
		QA		
		SCALE		

**VARTECH SYSTEMS**

17" Panel Mount Computer  
VTPC170PF-K

SIZE **D**

DWG NO. 482-0024-01

REV 02