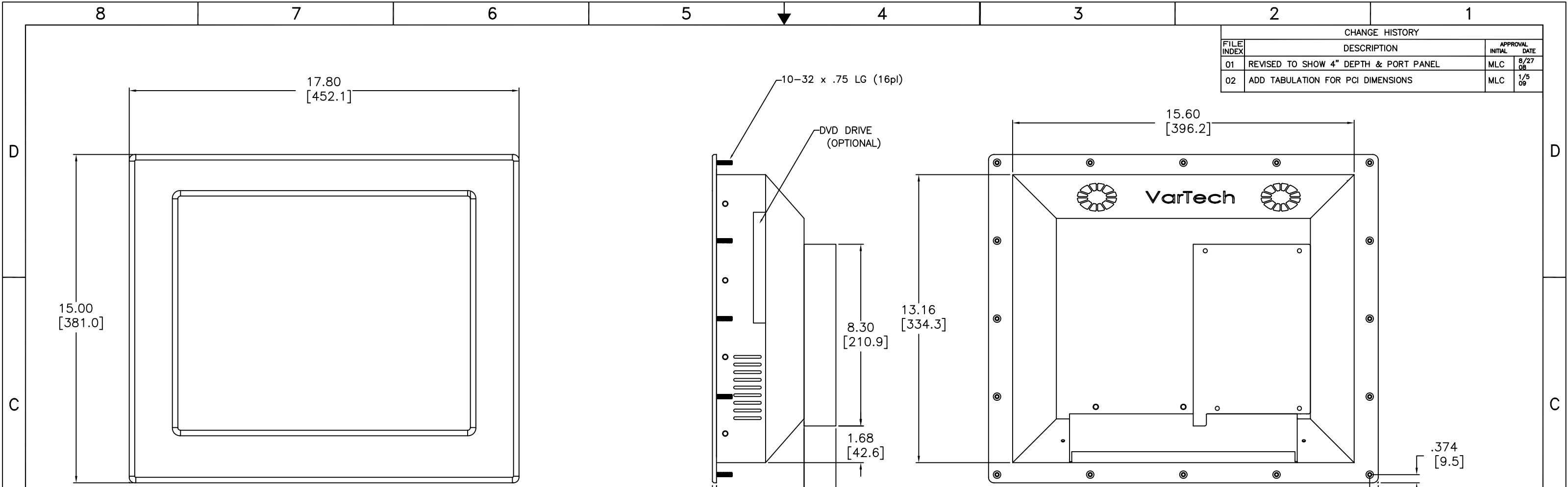


| CHANGE HISTORY | | | |
|----------------|---------------------------------------|------------------|---------------|
| FILE INDEX | DESCRIPTION | APPROVAL INITIAL | APPROVAL DATE |
| 01 | REVISED TO SHOW 4" DEPTH & PORT PANEL | MLC | 8/27/08 |
| 02 | ADD TABULATION FOR PCI DIMENSIONS | MLC | 1/5/09 |



FRONT

REAR

DIMENSION "B"

DIMENSION "A"

RECOMMENDED PANEL OPENING
DEBURR ALL HOLES & BREAK
SHARP EDGES

| ITEM | QTY | MFR. PT.NO. | DESCRIPTION | SYM/NOTE |
|--|-----|---------------------|-------------|---|
| LIST OF MATERIALS | | | | |
| UNLESS OTHERWISE SPECIFIED DIMENSIONS ARE IN INCHES AND APPLY BEFORE FINISH SURFACE ROUGHNESS .125/ TOLERANCE ON FRACTIONS DECIMALS ANGLES | | DRAWN NM 03/12/2008 | | VARTECH SYSTEMS |
| ± 1/64 ±.XX=.02 ± 1/2 | | CHECKED | | |
| | | DRAFTING | | |
| | | ENGINEER | | |
| MATERIAL | | MANUF | | 17" Panel Mount Computer VTPC170PSS-K |
| FINISH | | APPROVED | | |
| APPLICATION | | QA | | |
| VTPC170P USED ON | | DATE | | SIZE D |
| | | | | DWG NO. 482-0018-02 |
| | | | | REV 02 |
| | | | | SCALE |
| | | | | SHEET 1 OF 1 |