



Solutions for Demanding Applications

15.0" Intecolor Configured NEMA 12/4 Panel Mount

This 15.0" flat panel display is configured for use in Intecolor applications. It will replace Intecolor legacy products. It is designed to be placed in a variety of Industrial and Harsh environments requiring a NEMA 4/12 panel mount display system where Intecolor was originally used*.

SPECIFICATIONS**FEATURES**

- ◆ Bright Active Matrix TFT Display
- ◆ Compact, Low Profile
- ◆ Anti-Reflective Protective Faceplate
- ◆ Configured for Intecolor Applications
- ◆ HD15(F), RCA (NTSC/PAL) & 5 Pin Mini Din (S Video)

Marks of Conformity:

FCC47 CFR part 15, subpart B
EMC: EN 55022:2006, EN 55024:1998, CISPR 22:2005, CISPR 24:1997
Canada: ICES-003

Australia/New Zealand: AS/NZS CISPR 22

CE

RoHS
WEEE

*Supports all VESA standard video formats

Display Size

15.0 Inch

Panel Type

TFT Active

Resolution Capabilities

VGA to SXGA*

Native Resolution

XGA 1024 x 768

Pixel Format640 x 480, 800 x 600,
1024 x 768, 1280 x 1024***Pixel Pitch**

.297mm

Active Display Area12.11"(w) x 9.12"(h)
307.59mm(w) x 231.65mm(h)**Viewing Angle**Left / Right: 70/70 Degrees
Up / Down: 65/70 Degrees**Contrast Ratio**

300:1 Typical

Brightness

450 Nits Typical

Back Light

50,000 Hours Half Life

Colors Supported

16.7M

Input ConnectorHD15(F), RCA (NTSC/PAL)
5 Pin Mini Din (S-Video)**Optional:**

HD15 to 5BNC to Interface Cable

Video Input

Analog 0.7V p-p, NTSC/PAL

SyncSeparate H&V
Combined, SOG**Power Source**

90-264VAC Universal

Optional:

12VDC

Power Consumption

35 Watts

Temperature

Operating: 0 to 50°C

Storage: -20 to 60°C

Optional:

Operating: -20°C or -40°C

Humidity

Operating: 10 to 95%NC

Storage: 10 to 95%NC

Altitude

Operating: up to 10,000 ft

Storage: up to 40,000 ft

Bezel Outside Dimension

17.25"(w) x 13.97"(h)

438.2mm(w) x 354.8mm(h)

Cut Out Dimension

16.00"(w) x 12.7"(h)

406.4mm(w) x 322.6mm(h)

Depth Behind Panel

2.566" / 65.2mm nominal

Stud Size & Screw Length

10-32 x 1/2"

Weight

14.8 lbs / 6.73 kg

Chassis Construction

16 gauge Stainless Steel

Bezel Finish

Black Powder Coat

Cold Rolled Steel

Optional:

NEMA 4X Stainless Steel

Touchscreen**Optional:**

Resistive or Capacitive

Touch Interface

Serial

Optional:

USB

OPTIONS

- Capacitive Touch
- Resistive Touch
- HD15 to 5BNC Interface Cable
- 12VDC Power Supply
- Optical Bonding for added Shock & Vibration protection and/or reduced solar reflectivity
- Integrated Heaters & Thermostat for extended Operational Temperature -20°C
- Transparent Thermal Heaters for -40°C Operational Temperature
- Private Label for OEM/VAR Applications
- ITO Glass for Heater or EMI
- Automatic Dimming Sensor
- Manual Full-Range Dimming
- Stainless Steel NEMA 4X Front Panel

CONTACT**HEADQUARTERS**

11529 Sun Belt Ct.
Baton Rouge, Louisiana 70809

Phone 800.223.8050

International

001.225.298.0300

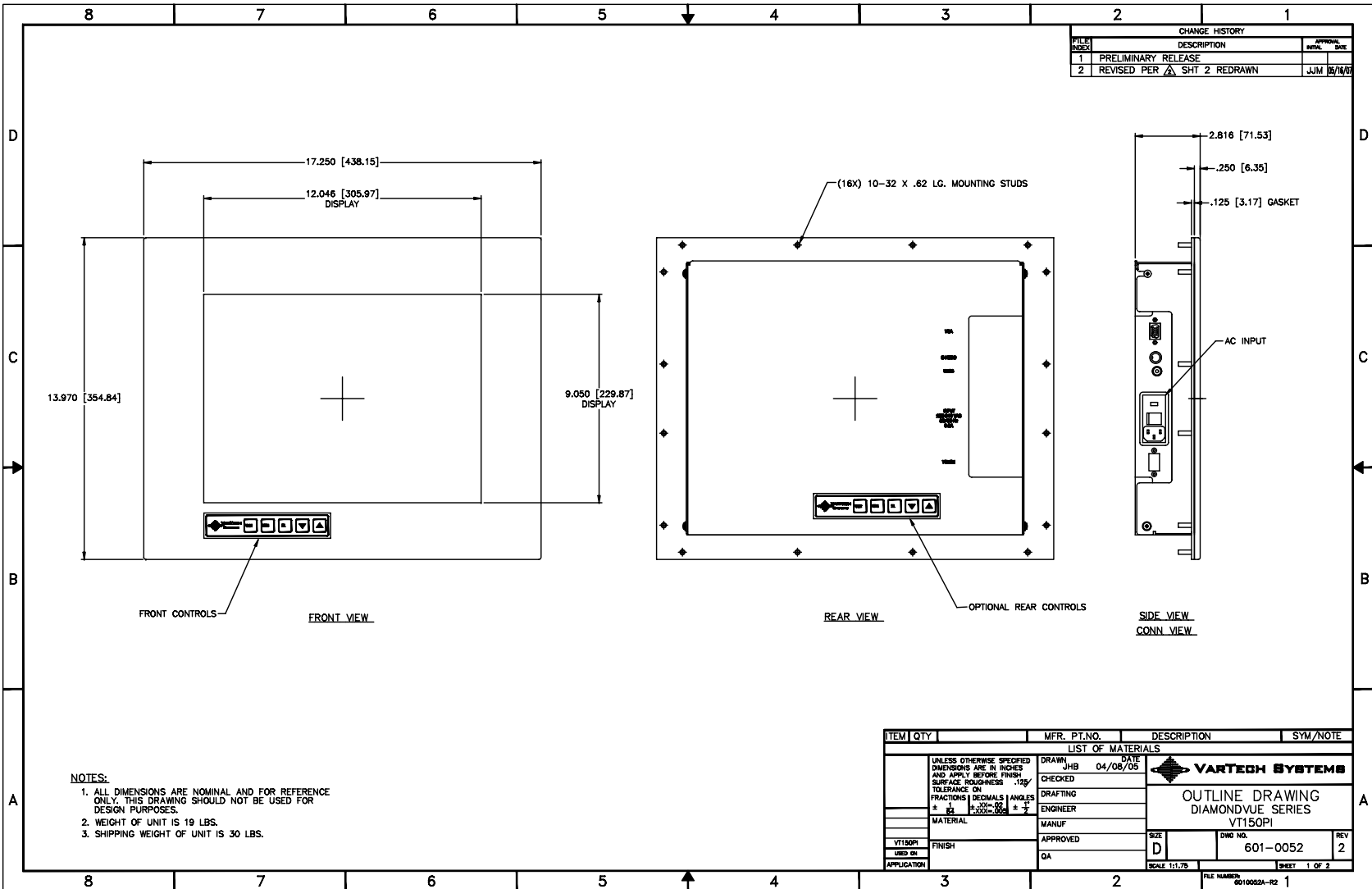
Fax 225.297.2440

E-mail

sales@vartechsystems.com

Website

www.vartechsystems.com



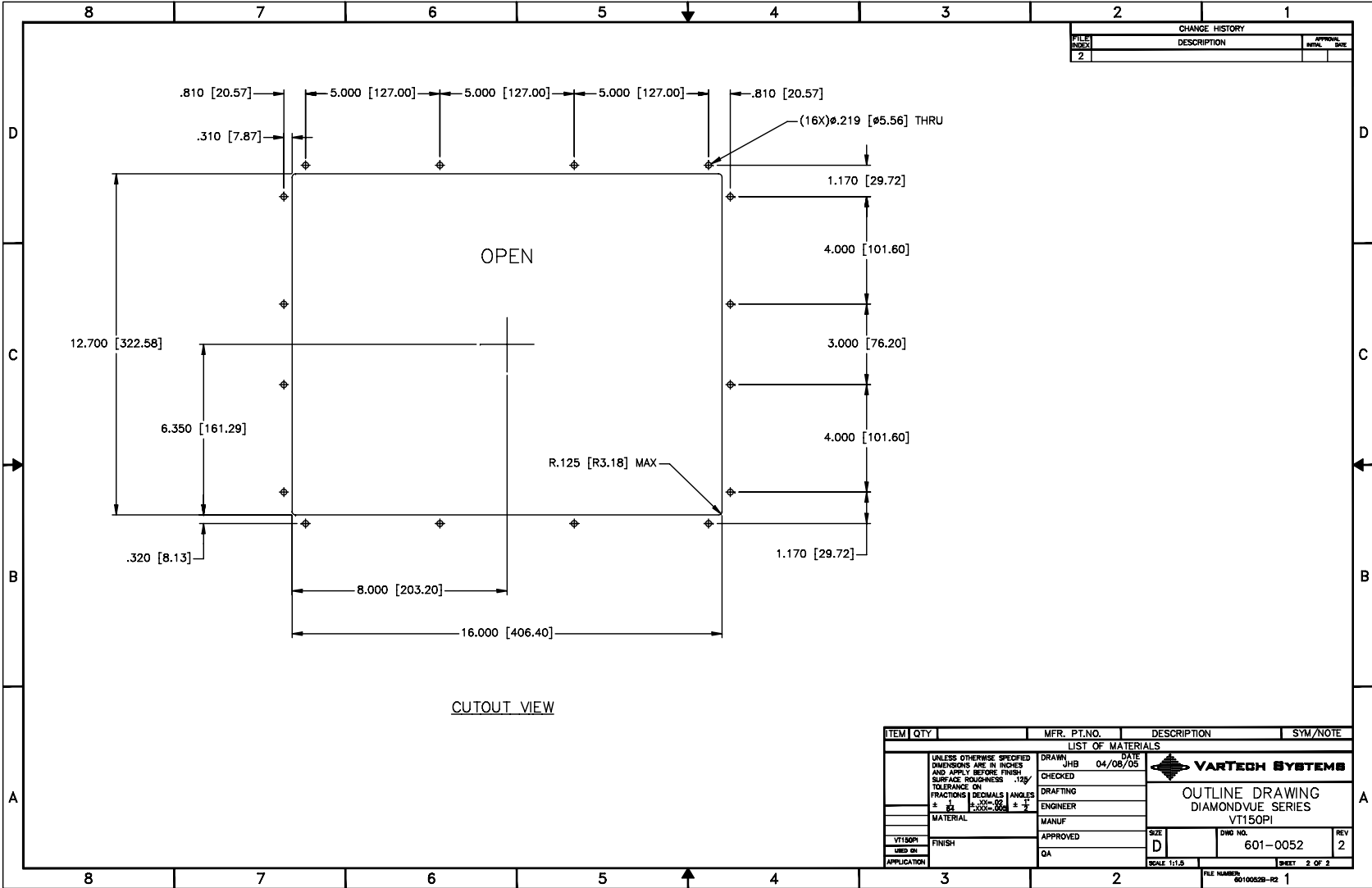
CHANGE HISTORY		
FILE INDEX	DESCRIPTION	APPROVAL DATE
1	PRELIMINARY RELEASE	
2	REVISED PER SHT 2 REDRAWN	JJM 8/16/05

- NOTES:**
1. ALL DIMENSIONS ARE NOMINAL AND FOR REFERENCE ONLY. THIS DRAWING SHOULD NOT BE USED FOR DESIGN PURPOSES.
 2. WEIGHT OF UNIT IS 19 LBS.
 3. SHIPPING WEIGHT OF UNIT IS 30 LBS.

ITEM	QTY	MFR. PT. NO.	DESCRIPTION	SYM/NOTE
LIST OF MATERIALS				
UNLESS OTHERWISE SPECIFIED DIMENSIONS ARE IN INCHES AND APPLY BEFORE FINISH		DRAWN	JHB	DATE 04/08/05
SURFACE ROUGHNESS 125/		CHECKED		
TOLERANCE ON FRACTIONS DECIMALS ANGLES		DRAFTING		
± 1/16 ± .005 ± .001		ENGINEER		
MATERIAL		MANUF		
VT150PI		APPROVED		
USED ON		QA		
APPLICATION				
			SIZE D	DWG NO. 601-0052
			SCALE 1:1.75	REV 2
			SHEET 1 OF 2	
			FILE NUMBER: 6010052A-R2	1

VARTECH SYSTEMS

OUTLINE DRAWING
DIAMONDVUE SERIES
VT150PI



CHANGE HISTORY			
FILE INDEX	DESCRIPTION	APPROVAL	DATE
2			

ITEM	QTY	MFR.	PT.NO.	DESCRIPTION	SYM/NOTE
LIST OF MATERIALS					
UNLESS OTHERWISE SPECIFIED DIMENSIONS ARE IN INCHES AND APPLY BEFORE FINISH SURFACE ROUGHNESS 125/		DRAWN JHB		DATE 04/08/05	
TOLERANCE ON FRACTIONS DECIMALS ANGLES		CHECKED		ENGINEER	
± 1/16 ± .005 ± 1/2		DRAFTING		ENGINEER	
MATERIAL		MANUF		APPROVED	
VT150PI		FINISH		QA	
USED ON		APPLICATION		SCALE 1:1.5	
				SIZE D	DWG NO. 601-0052
				REV 2	SHEET 2 OF 2
FILE NUMBER: 60100529-R2 1					



OUTLINE DRAWING
DIAMONDVUE SERIES
VT150PI