

# VT190RHB2



# VARTECH SYSTEMS INC.

Solutions for Demanding Applications



## 19" Sunlight Readable Industrial Grade Rack Mount LCD Display

This high luminance SXGA resolution 19.0" flat panel display is an industrial grade, rugged LCD display design to be placed in a variety of high ambient light harsh conditions while providing exceptional sunlight 'viewability'. The LCD's backlight system is powered by the latest high luminance light emitting diodes (LED) and the frontal cover-glass or touch screen has been optically bonded to the LCD face. These displays are auto sync compatible with various VESA video standards and satisfy a wide variety of industrial control and man-machine interface applications. Equipped with a milled all aluminum, black powder-coated, beveled frontal bezel designed for integration into 19" wide RETMA rack cabinets.

### FEATURES

- ◆ Sunlight Readable
- ◆ Very High-Brightness (1000 nits) Optically Bonded (VBOND), LED-Enhanced Active Matrix TFT Display
- ◆ HD15(F), DVI-D Pin, RCA, Mini Din
- ◆ High Contrast Ratio
- ◆ Low Power Consumption
- ◆ Anti-Reflective Protective Faceplate
- ◆ Optional Touch Systems
- ◆ VGA to SXGA
- ◆ High Shock and Vibration Resistance

#### Marks of Conformity:

FCC47 CFR part 15, subpart B  
 EMC: EN 55022:2006, EN 55024:1998, CISPR 22:2005, CISPR 24:1997  
 Canada: ICES-003  
 Australia/New Zealand: AS/NZS CISPR 22  
 CE  
 RoHS  
 WEEE



\*Supports all VESA standard video formats

### CONTACT

#### HEADQUARTERS

11529 Sun Belt Ct.  
Baton Rouge, Louisiana 70809

Phone 800.223.8050

International

001.225.298.0300

Fax 225.297.2440

#### E-mail

sales@vartechsystems.com

#### Website

www.vartechsystems.com

### SPECIFICATIONS

#### Display Size

19.0

#### Panel Type

Optically Bonded (VBOND) High Luminance, LED-Enhanced TFT Active Matrix Display

#### Native Resolution

SXGA (1280 x 1024)

#### Active Display Area

14.93" (w) x 11.96" (h) 379.1mm(w) x 303.86mm(h)

#### Viewing Angle

Left / Right: 85°/85° - Up / Down: 85°/85°

#### Contrast Ratio

1000:1

#### Brightness

1000 nits (cd/m2) LED Enhanced

#### Pixel Pitch

.264mm (w) x .264mm (h)

#### Colors

16.8M

#### Back Light

70,000 Hours Half Life

#### Power Consumption

35 Watts @ 115VAC, 4 Watts Sleep Mode

#### Power Source

90-264VAC Universal, **Optional:** 12VDC @ 2.5A

#### Video Input

VGA - 0.7Vp-p / 75 ohm, Composite - 1.0Vp-p / 75 ohm

#### Video Input Connectors

HD15(F), DVI-D, RCA (NTSC/PAL), 5 Pin Mini Din (S-Video)

**Optional:** HD15(M) to 5xBNC(F) Interface Cable

#### Sync

TTL Separate H&V, Combined, SOG

#### Temperature

Operating: -10 to 50° C, Storage: -20 to 60° C, **Optional: Operating:** -20°C or -40°C

#### Altitude

Operating: up to 10,000 ft, Storage: up to 40,000 ft

#### Bezel Finish

Milled Aluminum Black Powder Coat, **Optional:** NEMA 4X Stainless Steel

#### Touchscreen

**Optional:** Resistive, Capacitive, Projected Capacitive, Armor Touch

#### Touchscreen Interface

Serial or USB

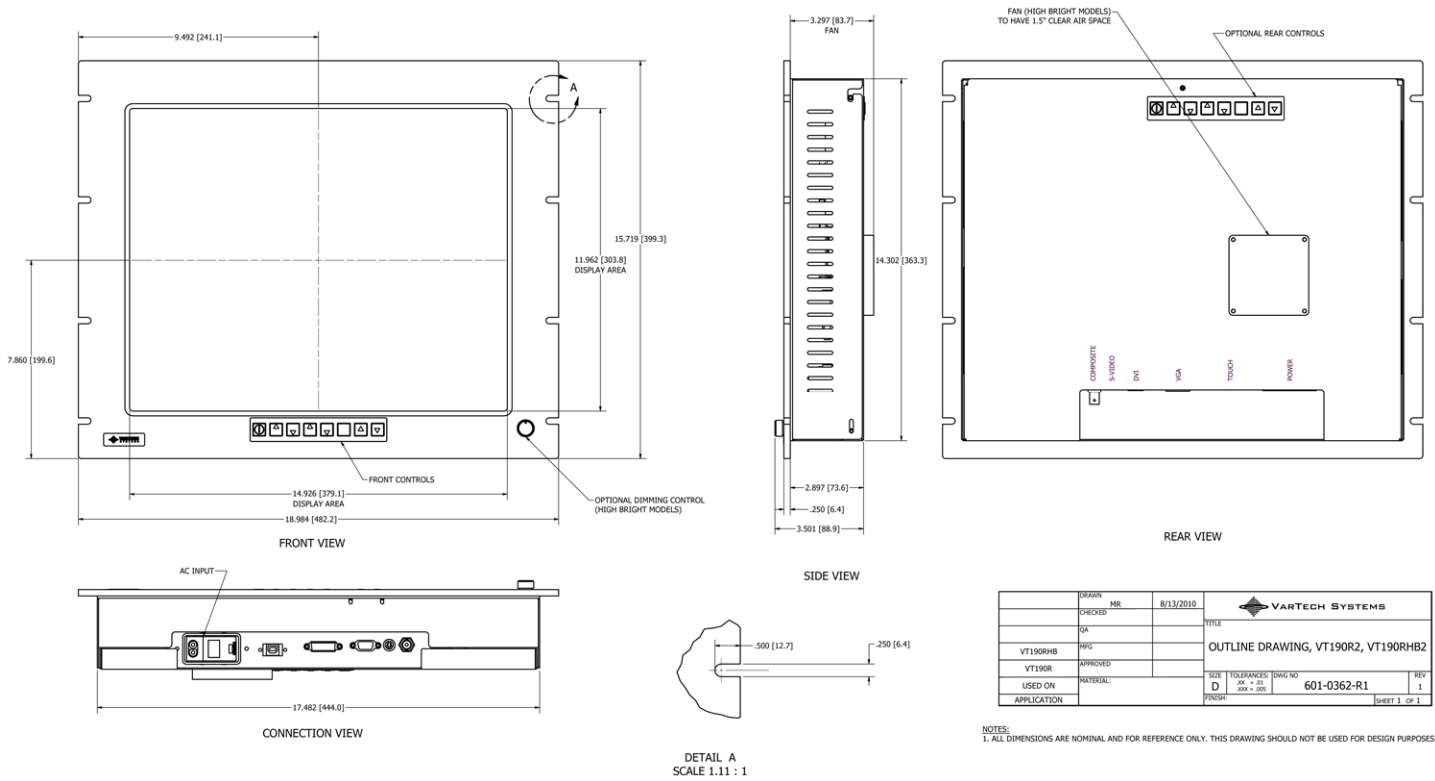
#### Warranty

2 years

### OPTIONS

- Touch Screen: Capacitive, Resistive Touch, or Armor Touch
- Extended Operational Temperature Capabilities -20°C or -40°C
- Private Label for OEM/VAR Applications
- Automatic Dimming Sensor
- Dimming: Manual, Wide fluid Full-Range down to true black
- 120 to 370 V DC

# Mechanical Drawing



DRAWN	MR	8/13/2010	<b>VARTECH SYSTEMS</b>	
CHECKED	QA			
VT190RHB	MRG		OUTLINE DRAWING, VT190R2, VT190RHB2	
APPROVED			SIZE	TOLERANCES
VT190R			D	XX + .01 XX - .02
USED ON	MATERIAL:		DWG NO	REV
APPLICATION			601-0362-R1	1
			DRAWN	SHEET 1 OF 1

NOTES:  
1. ALL DIMENSIONS ARE NOMINAL AND FOR REFERENCE ONLY. THIS DRAWING SHOULD NOT BE USED FOR DESIGN PURPOSES.