

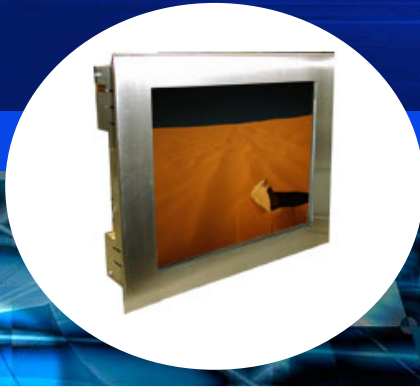


Solutions for Demanding Applications

21.3" UXGA NEMA 4X Stainless Steel Panel Mount

This 21.3" Stainless Steel flat panel display is designed to be placed in a variety of Industrial and Process Control environments requiring a large NEMA 4X panel mount that supports resolutions from VGA to 1600 x 1200 resolutions* with HD15 and SOG capabilities.

The display is auto sync compatible with most PC's video standards, and is adequate for a wide variety of industrial control and man-machine interface applications.



FEATURES

- ◆ Bright Active Matrix TFT Display
- ◆ HD15(F), DVI-D Pin, RCA, Mini-Din
- ◆ Optional Touch Systems: Resistive and Capacitive
- ◆ VGA to UXGA Resolution
- ◆ 1600 x 1200 Max. Resolution
- ◆ Picture in Picture

Marks of Conformity:

FCC47 CFR part 15, subpart B
EMC: EN 55022:2006, EN 55024:1998, CISPR 22:2005, CISPR 24:1997
Canada: ICES-003
Australia/New Zealand: AS/NZS CISPR 22
CE
RoHS
WEEE



*Supports all VESA standard video formats

CONTACT

HEADQUARTERS

11529 Sun Belt Ct.
Baton Rouge, Louisiana 70809

Phone 800.223.8050

International

001.225.298.0300

Fax 225.297.2440

E-mail

sales@vartechsystems.com

Website

www.vartechsystems.com

SPECIFICATIONS

Display Size

21.3 Inch

Panel Type

TFT Active

Resolution Capabilities

VGA to UXGA*

Pixel Format

640x480, 800x600, 1024x768,
1280 x 1024, 1600 x 1200*

Pixel Pitch

.270 mm (w) x .270mm (h)

Viewing Angle

Left / Right: 89°/89°
Up / Down: 89°/89°

Active Display Area

17.008" (w) x 12.756" (h)
432.00mm x 324.00mm

Picture in Picture

Small Window: 3.6" (w) x 2.9" (h)
Med. Window: 5.0 (w)" x 4.9" (h)
Large Window: 6.5 "(w)" x 5.0" (h)

Contrast Ratio

800:1

Brightness

300 Nits Typical

Backlight

50,000 hrs. Typical

Colors Displayed

16.8M

Video Input

0.7v p-p, /75 ohm digital

Sync

TTL Separate H&V,
Combined SOG

Input Connectors

HD15(F), DVI-D
RCA, (NTSC/PAL),
5 Pin Mini Din (S-Video)

Optional:

HD15 to 5BNC Adapter

Power Source

90-264VAC Universal

Power Consumption

50 Watts @ 115VAC
8 watts sleep mode

Temperature

Operating: 0° to 50°C
Storage: -20° to 60°C

Optional:

Operating: -20°C or -40°C

Humidity

Operating: 10 to 95%NC
Storage: 10 to 95%NC

Altitude

Operating: up to 10,000 ft
Storage: up to 40,000 ft

Outside Dimension

21.500" (w) x 18.294" (h)
546.1mm x 464.7mm

Cut Out Dimension

20.360" (w) x 17.154" (h)
517.1mm x 435.7mm

Depth Behind Panel

3.498" / 88.8mm

Stud Size & Screw Length

10-32 x 1/2"

Chassis Construction

16 gauge Stainless Steel

Bezel Finish

NEMA 4X Stainless Steel

Touchscreen

Optional:

Resistive or Capacitive

Touch Interface

Serial

Optional:

USB

Weight

33.6 lbs/ 15.27 kg

OPTIONS

- Capacitive or Resistive Touch
- HD15 to 5BNC Cable
- 12VDC or 24VDC
- Optical Bonding for added Shock & Vibration protection and/or reduced solar reflectivity
- Integrated Heaters & Thermostat for extended Operational Temperature -20°C
- Transparent Thermal Heaters for -40°C Operational Temperature
- Private Label for OEM/VAR Applications
- ITO Glass for Heater or EMI
- Automatic Dimming Sensor
- Manual Full-Range Dimming