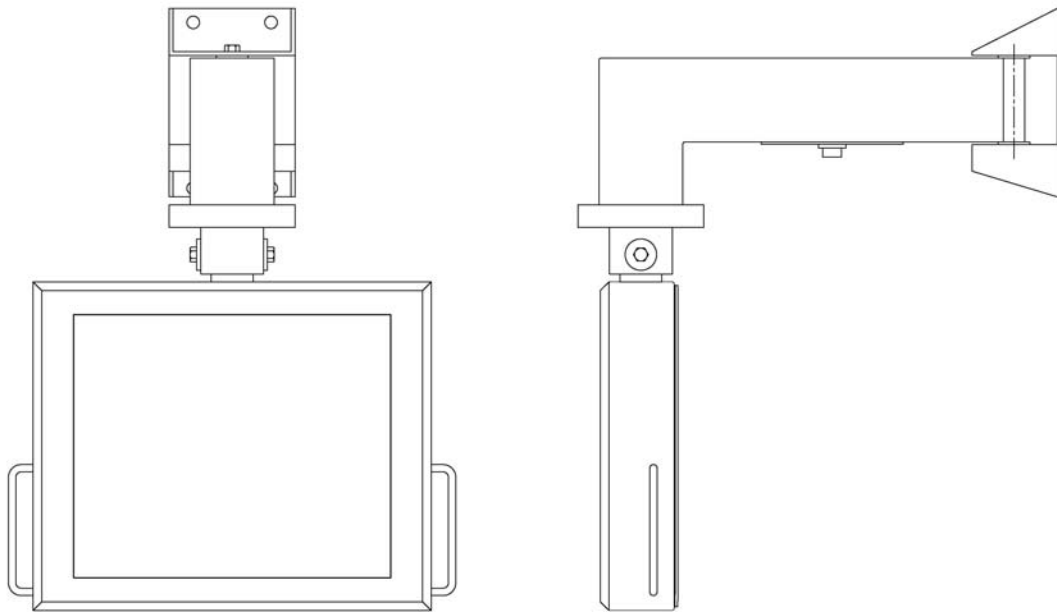




Solutions for Demanding Applications

**VARTeCH
SYSTEMS INC.**



19.0" Enclosed LCD

Model VT190PVS W/ARM

User's Guide

Read these instructions completely before attempting to operate your new Enclosed LCD

Revision History

Date	Rev No	Summary	Page
03/27/09	00	First Issue	

Safety Instructions

- Read the Safety Instructions carefully and keep it for use later.
- The chassis metalwork of the module must be installed properly to the main earthing termination for Class 1 equipment.
- Care must be exercised in the application of the system to prevent overheating. Ensure that the ambient temperature around the system does not exceed 50°C and provide adequate means of ventilation to achieve this.
- When cleaning cut off the electrical supply at all times. Never use liquid or aerosol detergent, use a soft damp cloth instead.
- Never insert anything metallic into the enclosure. This may create an electric shock hazard or hazard from rotating fan blades.
- To avoid electric shock, never touch the inside of the system. There are no user adjustable components inside, only a qualified technician should open the enclosure's case.
- If the LCD does not operate normally – in particular, if there are any unusual sounds or smells coming from it – disconnect it immediately.
- Do not put pressure on the LCD panel screen because it is very fragile.
- Always handle the system with care when moving it.
- Take care that the system is disposed of correctly at the end of its life. If in doubt refer to your local ordinances or regulations for proper disposal.

Cleaning the LCD monitor

To clean the LCD panel:

- Wipe the screen gently with a clean lens brush made of camel hair, or a soft, clean, lint free cloth. This is to remove dust and other particles without scratching the LCD panel.
- If it is still not clean, then wipe with a damp lint free cloth and blow on it to dry.
- Desirable cleaners are water, IPA (Isopropyl Alcohol) or Hexane.

Do not clean the panel with a Ketone type material (e.g. Acetone), or Ethyl alcohol, Toluene, Ethyl acid, Methyl chloride. These may permanently damage the polarizer due to chemical reaction.

Do not apply pressure to the LCD panel.

Standard Technical Specifications:

LCD Monitor:

Size / Type	19.0" XGA TFT LCD
Native Resolution	1280 x 1024
Contrast Ratio	1000:1
Viewing Angles	Horizontal: 178° Vertical: 178°
Pixel Pitch	0.294mm
Brightness (typical)	250 cd/m ²
Response Time (typical)	12ms
Colors Supported	16.7 million

Touch Screen:

Touch Screen	Resistive
Touch Screen Interface	Standard: Serial

Environmental:

Power Input	100-240 VAC 1.5A 50/60 Hz
Power Consumption	30W
LCD Weight	23.5 lbs
Temperature	Operational: 32°F to 122°F 0°C to 50°C Storage: -40°F to 149°F -40°C to 65°C
Humidity	Operational: 0 to 90% RH NC Storage: 0 to 95% RH NC

Installation of Your Enclosed VESA Mount PC

Packaged with each carton will be:

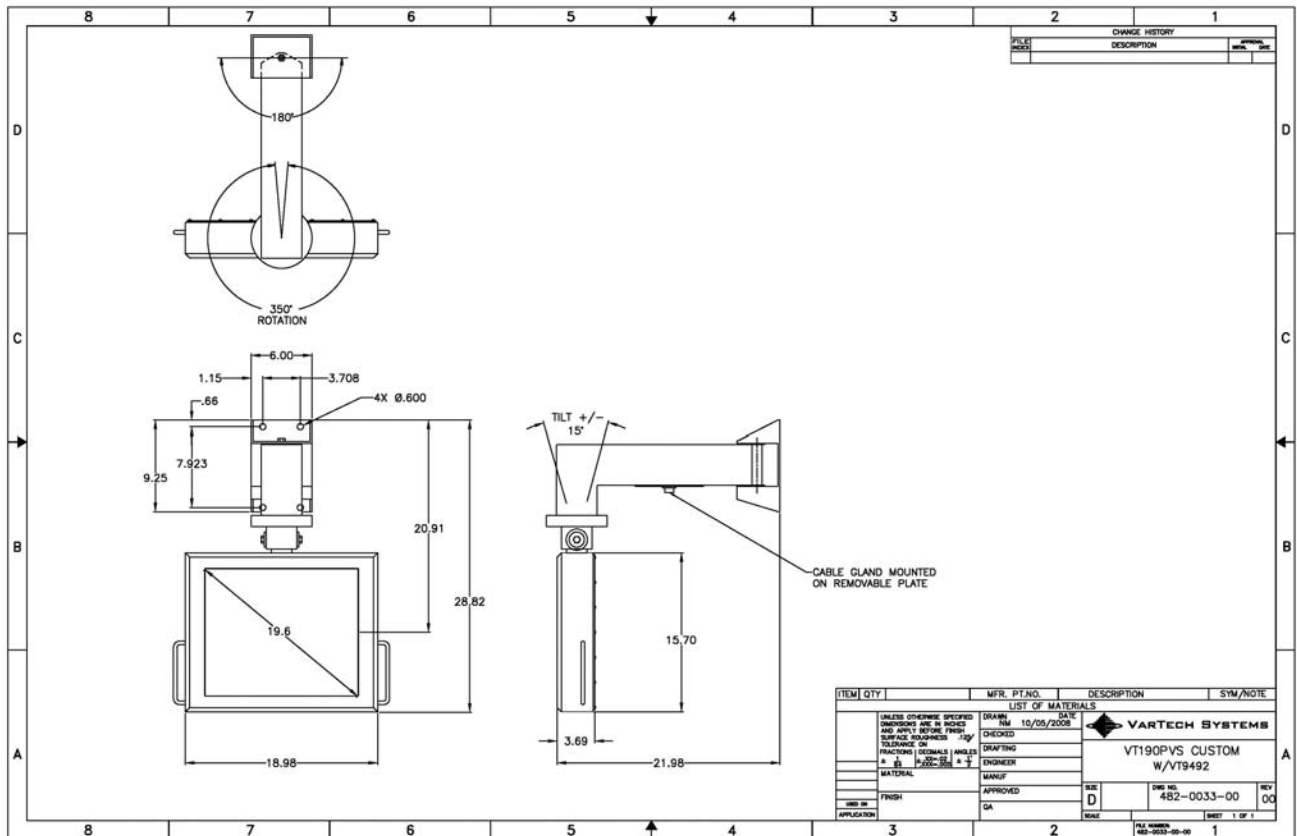
- 1 - VT190PVS W/ARM
- 1 - AC Power Cable
- 1 - Serial Touch Screen Cable
- 1 - VGA Cable
- 1 - Users Guide (Printed or on CD)

**BEFORE MAKING ANY CONNECTIONS OR APPLYING POWER,
FIRST READ THROUGH THE ENTIRE MANUAL**

Mounting Procedure

ATTACH ARM TO WALL:

ATTENTION: Ensure that the wall structure is capable of supporting four times the total weight of the mounted equipment. Mounting to wall surfaces that do not meet these criteria may result in an unstable, unsafe condition which could result in personal injury and/or property damage. Vartech Systems assumes no responsibility for water or chemical damage to the monitor or other equipment within the enclosure due to improper installation.



Product Drawing: Detail -A-

Connections to the Enclosed LCD:

Power Connection (Power In)

The Enclosed LCD includes an AC line cord which is 10ft long. The power input receptacle is located on a panel mounted to the support arm of the system.

VGA Port Connection (VGA)

The Enclosed LCD is supplied with a 15-pin D-Shell connector. The cable is located on a panel mounted to the support arm of the system.

Touch Screen Connection (TOUCH)

The Enclosed LCD is supplied with a 9-pin D-Shell serial connector configured for resistive touch screen. The cable is located on a panel mounted to the support arm of the system.

LCD Monitor Warm-up Time

All LCD monitors need time to become thermally stable the first time you turn them on. Therefore, to achieve more accurate adjustments for parameters, allow the LCD monitor to warm (be on) for at least 20 minutes before making any screen adjustments.

Maintenance

The Enclosed LCD is designed to provide optimum service and performance with minimal maintenance including the occasional external cleaning. For cleaning the Enclosed LCD enclosure follow the suggested guidelines.

General – NEVER use abrasive cleaners or solvent-based cleaners!! Use a clean soft cloth. The Enclosed LCD should only be opened and serviced by a qualified technician. Keep the area around the Enclosed VESA Mount PC clear and free of excessive dirt or other contaminants.

For Additional Assistance
Contact Your VarTech Sales Representative

Vartech Systems, Inc.
11529 Sun Belt Ct.
Baton Rouge, LA 70809

800-223-8050
Fax: 225-297-2440

www.vartechsystems.com